


## Reunion 10 Basics Class

October 2014

### The Home Family

 The **home** family is the family that appears when you open a family file. To go back home, click the **Home** button on the bottom bar.

This will determine what family is displayed when your file opens. Also, clicking on the House will always take you to this family no matter where in the file you are. To change to a new family,

**Family View -> navigate to preferred family -> drag one spouse to House Icon.**

### The History Button

As you navigate in the family view — moving from family to family, whether using the **Back**, **Home**, or **Forward** buttons, person buttons, a sidebar, or List window — Reunion keeps track of where you've been in a "history" list. Click the **History** button in the bottom bar to show a list of couples in the history list.

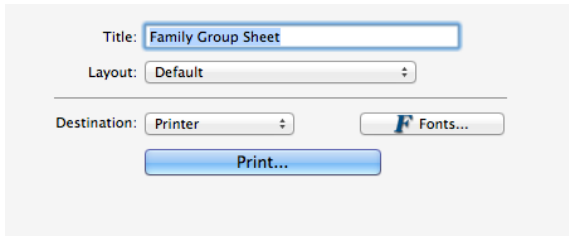


Looking at the list, the current family is at the bottom. As you move from the bottom to the top of the list, couples are shown in the order that they appeared in the family file. Clicking any item in the list will take you directly to the respective family or person.

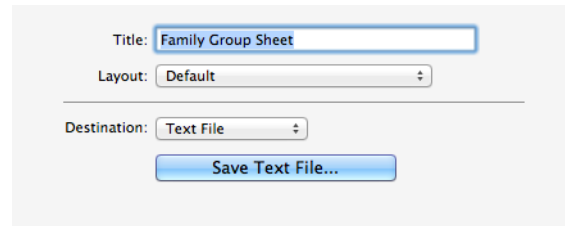
### Printing Reports

Such as a family group sheet...

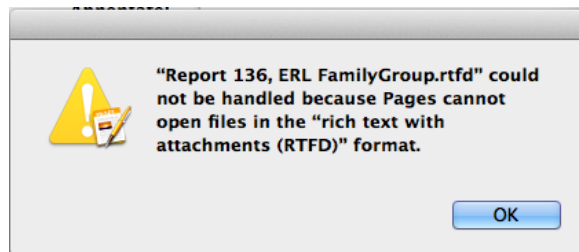
**Reports -> Family Group Sheet -> Print**



← This will give you different results than: This →

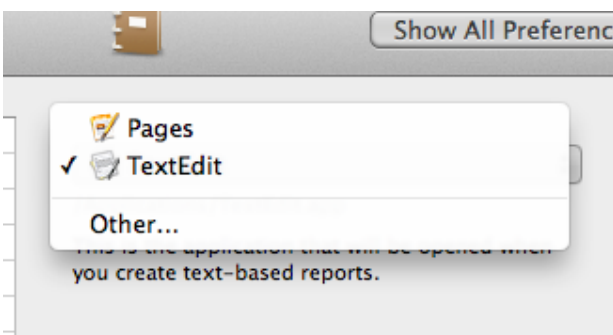
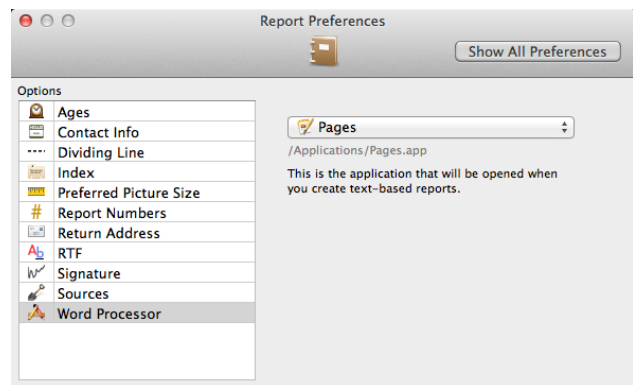


If you have the latest version of 10.9.5 the report will not be able to print with Pages. You will get this message:



To identify your word processor...

1. Choose **Reunion** -> **Preferences**.
2. Click **Reports**.
3. Click **Word Processor**.



Instead of Pages, choose TextEdit.